

San Diego Miramar College

Accreditation Fact Sheet

College Mission Statement

Miramar College's mission is to prepare students to succeed in a complex and dynamic world by providing quality instruction and services in an environment that supports and promotes diversity, equity, and success, while emphasizing innovative programs and partnerships to facilitate student completion for transfer, workforce training, and/or career advancement.

Resource: <http://www.sdmiramar.edu/institution/plan/>

Institutional Goals

The College Mission Statement guides college-wide planning and the development of the Strategic Plan. The Strategic Plan contains the following four Strategic Goals (= institutional goals):

Goal I: Provide educational programs and services that are responsive to change and support student learning and success.

Goal II: Deliver educational programs and services in formats and at locations that meet student needs.

Goal III: Enhance the college experience for students and the community by providing student-centered programs, services and activities that celebrate diversity and sustainable practices.

Goal IV: Develop, strengthen and sustain beneficial partnerships with educational institutions, business and industry, and our community.

Resource: http://www.sdmiramar.edu/webfm_send/16106

Institutional Student Learning Outcomes

The College uses a modified version of the AAC&U's Essential Learning Outcomes to describe the Institutional Student Learning Outcomes (ISLOs) at Miramar:

ISLO 1: Knowledge of Human Cultures and the Physical and Natural World

ISLO 2: Intellectual and Practical Skills

ISLO 3: Personal and Social Responsibility

ISLO 4: Integrative and Applied Learning

Resource: <http://www.sdmiramar.edu/institution/slo/slo-statements>

Student Population

Miramar College reached 8, 746 Full Time Equivalent Students (FTES) in 2015-2016, with an unduplicated headcount of 22,180. The College is projected to surpass 10,000 Full Time Equivalent Students (FTES) by 2019.

Resource: http://research.sdccd.edu/docs/Rsrch Reports/Facts on File/Facts on File 2015-2016_vr5.pdf

Student Achievement Data

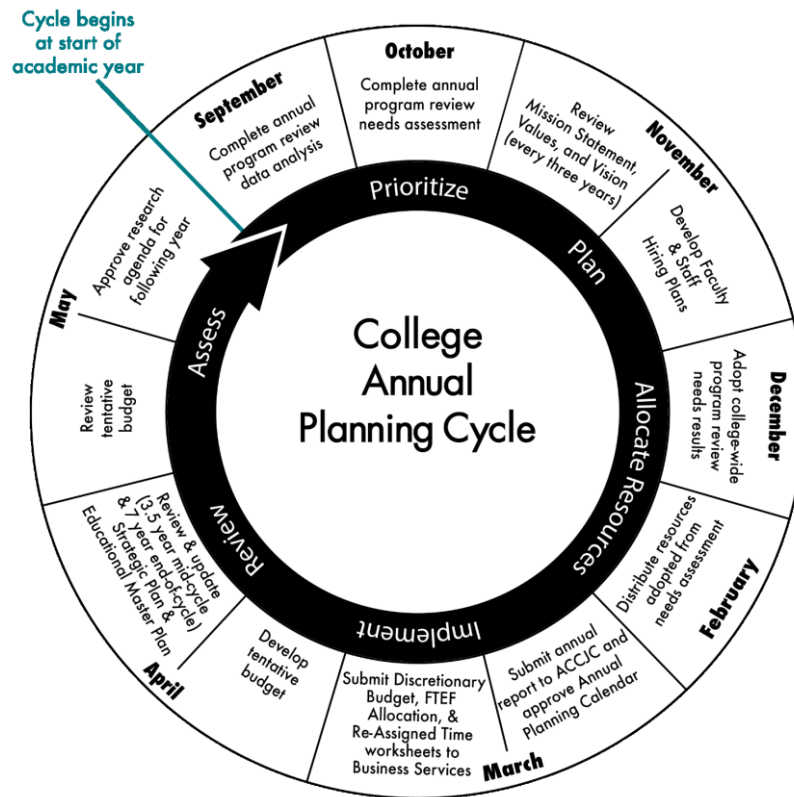
2015-2016 Student Achievement Information summary:

- Student Success Rate: 76%
- Student Retention Rate: 90%
- Student Completion: 51% (overall); 69% (prepared); 45% (unprepared)
- Degrees and Certificates awarded: 1243

Resource: http://research.sdccd.edu/docs/Rsrch Reports/Facts on File/Facts on File 2015-2016_vr5.pdf

Annual Planning Process

This annual process uses Program Review as the basis for annual planning and includes target dates, actions, and responsible parties. The Annual Planning Cycle includes the following:



Resource: http://www.sdmiramar.edu/webfm_send/14478

Program Review Process

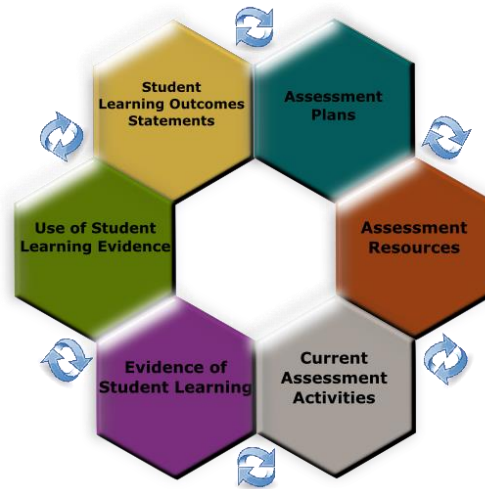
The Program Review process is on a three-year cycle (with exception of the Administrative Services Division) to allow programs and units time to review and reflect on internal and external factors affecting program/unit success, to develop goals, and to implement actions to achieve those goals. Program Review is then used to develop resource allocation, faculty and staff hiring prioritization lists, and to inform long-term planning, as seen below:



Resource: <http://www.sdmiramar.edu/institution/plan/review>

Outcomes and Assessment Process

The Outcomes and Assessment process is on a three-year cycle to inform Program Review in the different Divisions and to allow time for faculty/staff to develop meaningful outcomes and assessment plans, perform assessment, analyze results, and develop action plans to improve student learning and/ or success. Outcomes and Assessment takes place at the course, program, service unit and institutional levels, and provides information to internal and external constituencies in the following areas:



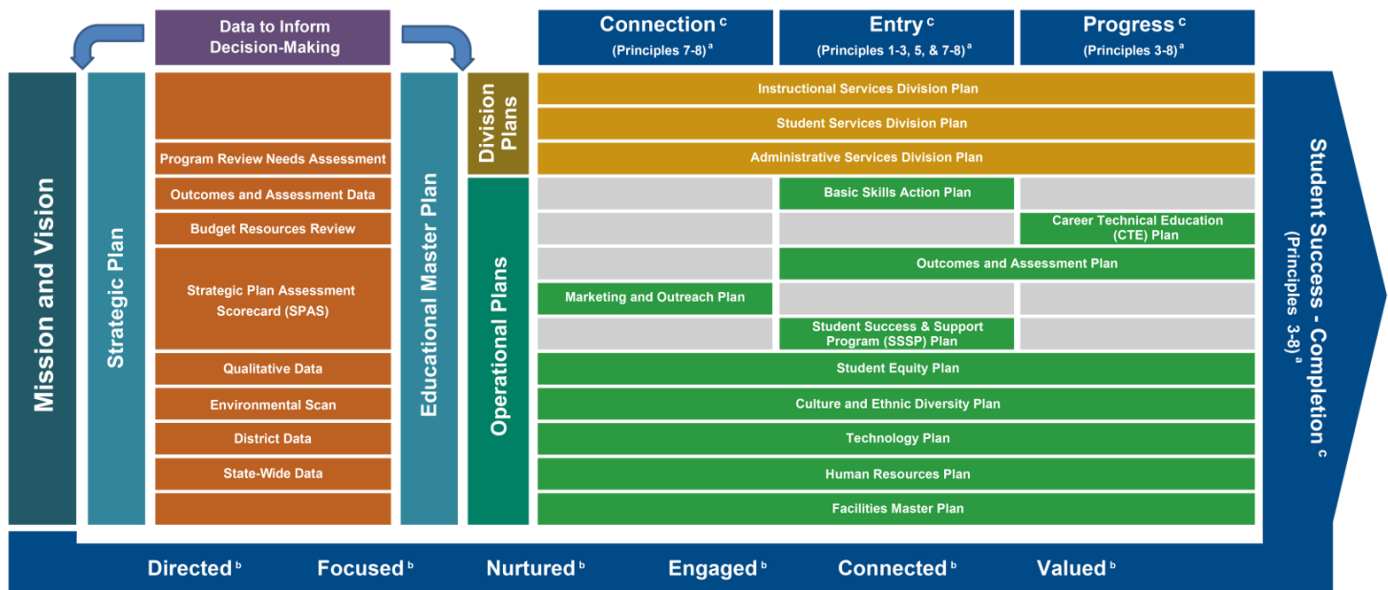
Resource: <http://www.sdmiramar.edu/institution/slo/>

Long-term Planning

The College has developed an interactive Student Success Framework for Long-term Integrated Planning, which is used to connect planning at various levels throughout the College. In brief, the framework shows the relationship between various planning guides and processes:

SAN DIEGO MIRAMAR COLLEGE

Student Success Framework for Long-Term Integrated Planning • Fall 2016 - Spring 2020



^a Principles of Redesign (Source: Completion By Design Initiative)

^b Six Factors of Student Success (Source: Student Support Redefined Initiative)

^c Loss/Momentum Framework (Source: Completion By Design Initiative)

Resource: <http://www.sdmiramar.edu/institution/plan/>

Hiring Processes

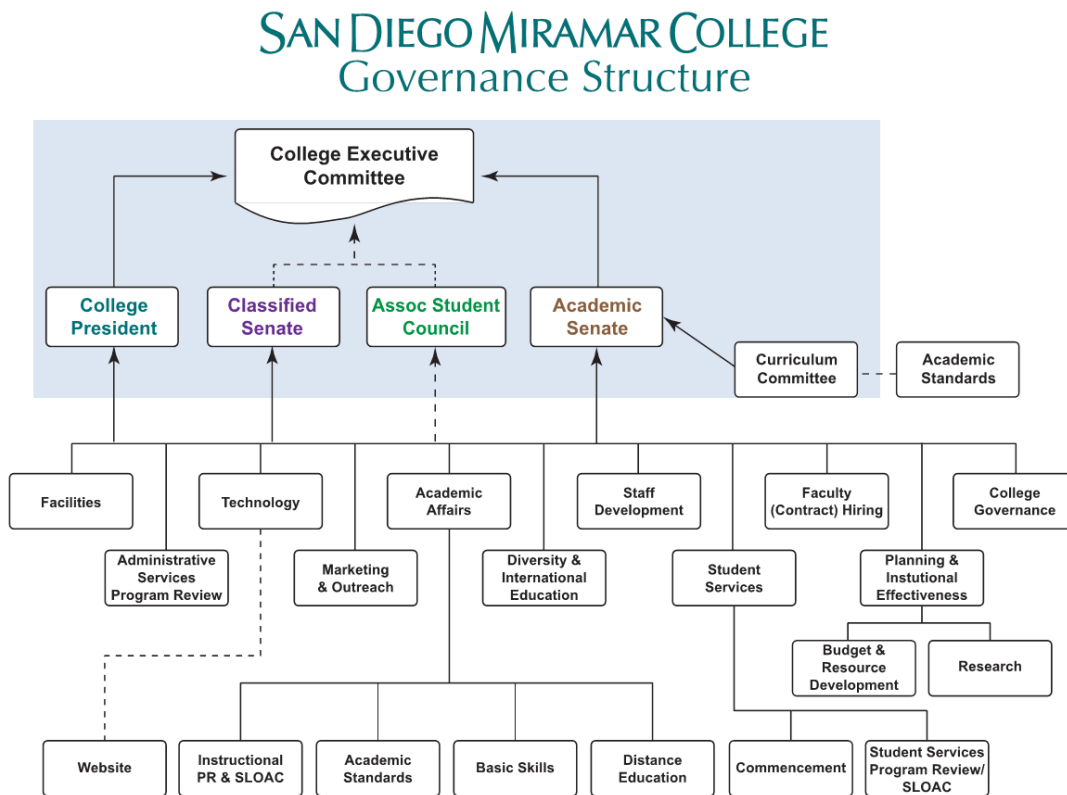
Faculty and classified hiring priority recommendations are driven by evidence gathered from Program Review for departments and units throughout the College. The evidence is used by the Faculty (Contract) Hiring Committee to determine priority recommendations for ranking faculty positions; the VPs determine priority recommendations for classified positions. As money is allocated to the College, positions are filled from the ranked lists.

Resource: http://www.sdmiramar.edu/webfm_send/12184

Resource: <http://www.sdmiramar.edu/content/committees/HIRE>

College Governance Structure

Decision-making governance bodies and committees are identified in the blue box below. The remaining committees and subcommittees perform specific functions and/or make recommendations to the decision-making bodies. The Academic Senate President appoints faculty representatives to committees; the Classified Senate President appoints classified representatives to committees; and the College President appoints administrative representatives to committees.



Resource: <http://www.sdmiramar.edu/faculty/governance>